

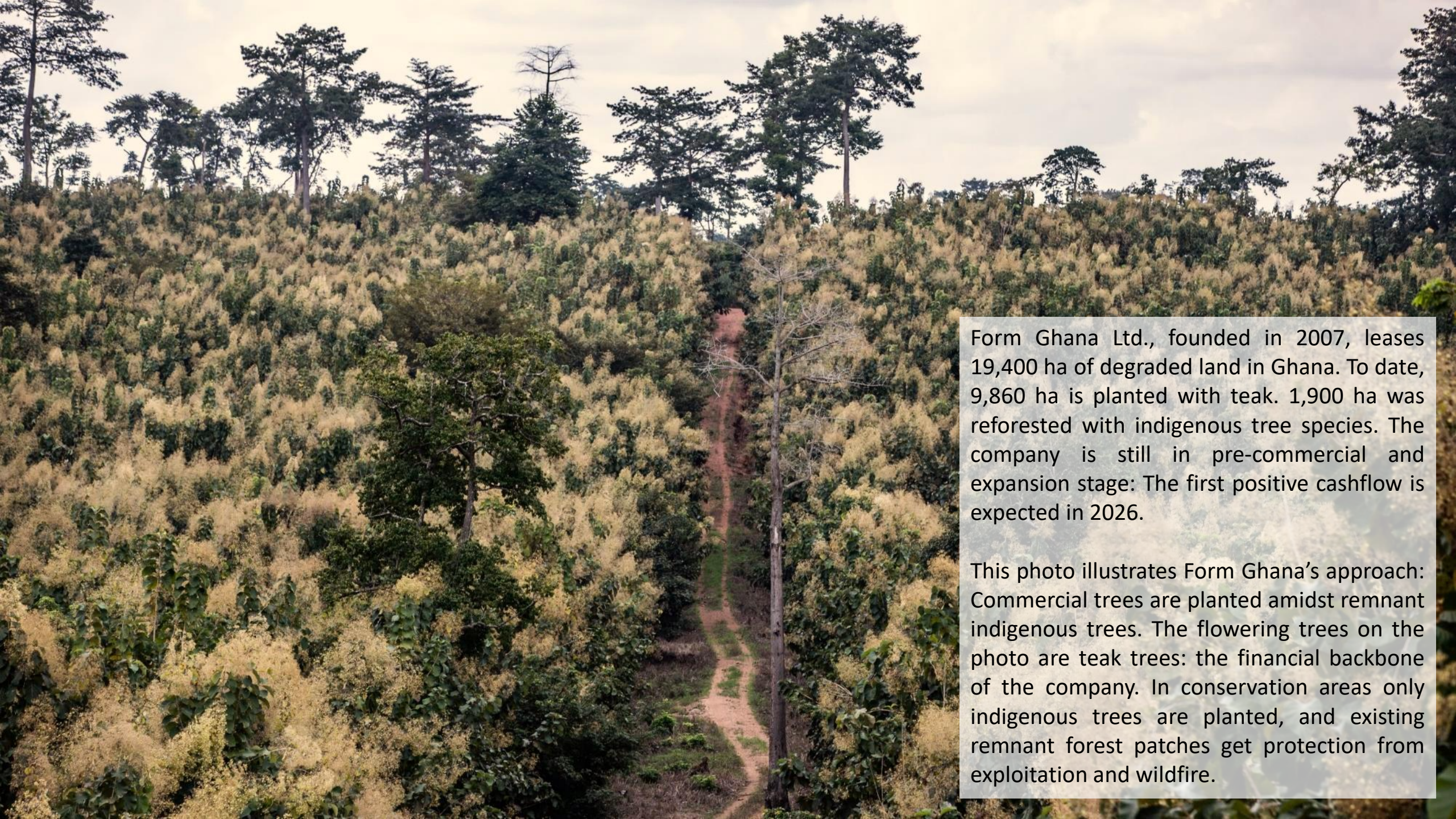
Forest Landscape Restoration for Forest Reserve Tain II





This is Forest Reserve Tain II. Form Ghana is a commercial forestry plantation company that invests in Forest Reserves that are highly degraded and lack tree cover.

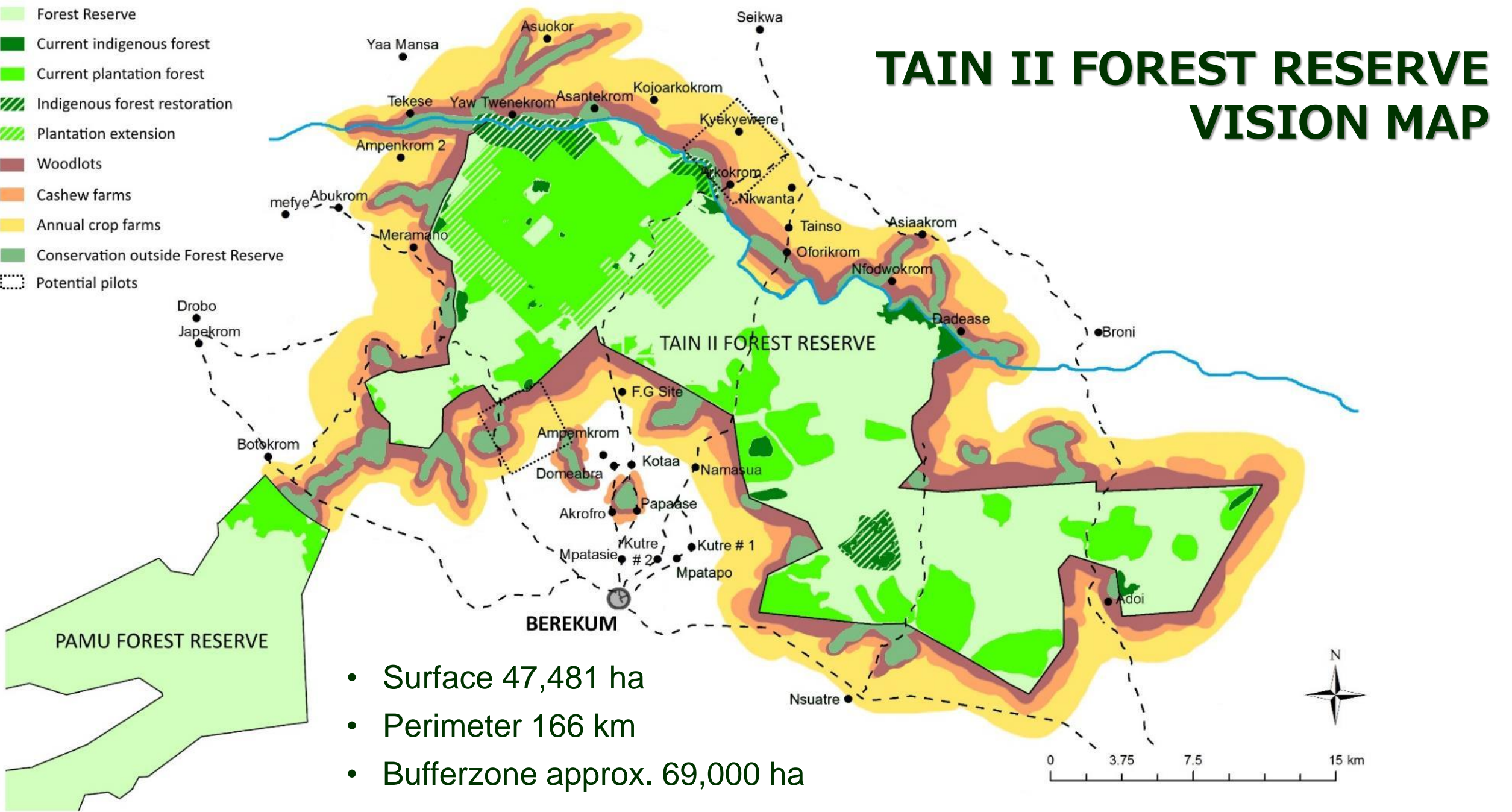
This photo illustrates what Tain II FR looked like before Form Ghana's presence. The Forest Reserve is adhesive to illegal logging, encroachment, excessive weed growth, and annual wildfires. The Tain II Forest Landscape Programme (TLP) enabled actors to tackle several issues that previously led to landscape degradation. The founded Landscape Governance Board provided the solid basis for bringing together stakeholders in the landscape to take action.



Form Ghana Ltd., founded in 2007, leases 19,400 ha of degraded land in Ghana. To date, 9,860 ha is planted with teak. 1,900 ha was reforested with indigenous tree species. The company is still in pre-commercial and expansion stage: The first positive cashflow is expected in 2026.

This photo illustrates Form Ghana's approach: Commercial trees are planted amidst remnant indigenous trees. The flowering trees on the photo are teak trees: the financial backbone of the company. In conservation areas only indigenous trees are planted, and existing remnant forest patches get protection from exploitation and wildfire.

TAIN II FOREST RESERVE VISION MAP



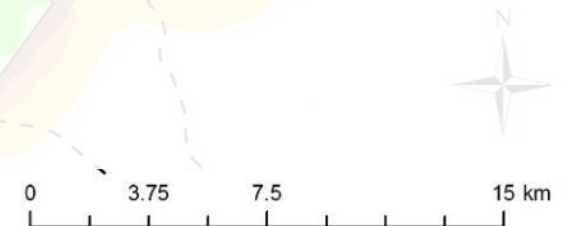
- Surface 47,481 ha
- Perimeter 166 km
- Bufferzone approx. 69,000 ha



In 2017, Form International and Form Ghana initiated the programme called *Integrated Sustainable Forest Managment Tain II Forest Reserve* (abbreviated to TLP).

A long-term business plan was developed based with the vision to restore an area of 100,000 hectares of degraded forests and lands in and around the Forest Reserve Tain II through a multi-stakeholder Public Private Partnership.

The key strategy for this is to enhance agroforestry productivity, income generation, access to markets and nature conservation and break the downward spiral of degradation the landscape currently faces. Support will be given specifically to smallholders and communities to achieve this.



Achievements so far

- Landscape Governance Board established and operational
- The revision of the Bylaws on bushfires and cattle herding in 2 districts to enable sustainable land management



LANDSCAPE GOVERNANCE BOARD



BUSINESS MODEL BENEFICIAL ON VILLAGE / FARMER /
FIRE SQUAD LEVEL

Achievements so far

- 1075,68 hectares of Eastern Guinean Lowland Forest restored within 3 years with 38 native tree species along Tain river, amongst others with endangered species *Talbotiella gentii*



Achievements so far

- Land under community fire management: 5,626 hectares
- 79% reduction in uncontrolled fire outbreaks



Achievements so far

- 1440 hectares of sustainably managed land by farmers and planted with agroforestry systems and native species as farm boundary.
- 8 hectares demonstration farm established to trial high value tree and annual crops



Achievements so far

- 500 farmers supported with market linkage and reducing post-harvesting losses

